



INTEGRA REALTY RESOURCES

# IRR | KANSAS CITY

COMMERCIAL REAL ESTATE  
VALUATION & CONSULTING





25+

years serving U.S. markets

**IRR® — INTEGRA REALTY RESOURCES —**

provides world-class commercial real estate valuation and counseling services to both local and national top financial institutions, developers, corporations, law firms, and government agencies. As one of the largest independent property valuation and counseling firms in the United States, we provide our diverse array of clients the highly informed opinions and trusted expert advice needed to understand the value, use and feasibility of their real estate. ***IRR. Local expertise. Nationally.***

27,000

appraisals completed  
annually



## RECENT APPRAISAL ASSIGNMENTS OF NOTABLE AND VARIED ASSETS

### Office



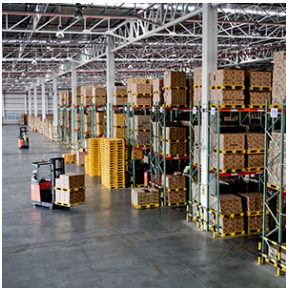
- Overland Park, KS – 153,200 sf mixed-use office/retail center (Class B)
- Mission, KS – Portfolio of 12 office properties (Class A & B)
- Overland Park, KS – 10,950 sf Class A medical office/surgery center
- Kansas City, MO – Portfolio of 3 Class B medical office properties
- St. Louis, MO – 87,040 sf renovated office with retail addition

### Retail



- Prairie Village, KS – 82,744 sf Class C shopping center
- Olathe, KS – 50,082 sf Class A retail building
- Kansas City, MO – Portfolio of 2 Class C retail shopping centers
- Kansas/Missouri – Portfolio of 4 quick lube facilities
- Warrensburg, MO – 36,373 sf movie theater

### Industrial



- Kansas City, MO – 696,000 sf Class C self-storage facility
- Olathe, KS – 590,000 sf Class A cold storage/distribution warehouse
- Kansas City, MO – 40,991 sf medical marijuana growing facility
- Wichita, KS – 11,000,000 sf aerospace manufacturing facility
- Greater Kansas City, MO/KS – Portfolio of 6 Class A/Class B distribution

### Multifamily/Hospitality



- Olathe, KS – Proposed 383-unit mixed-use apartments/retail (Class A)
- Overland Park, KS – 232 Unit Class B Apartment Complex
- Wichita, KS – Proposed Class A 141-unit apartments
- Kansas City, MO – Portfolio of 3 apartment complexes (Class A/B)
- Springfield, MO – 80-unit mixed-use apartments/office (Class A)
- Columbia, MO – 114 room hotel with proposed expansion

## OUR VALUE PROPOSITION

What sets our firm apart is the longevity of our principals and senior analysts who have been collaborating on property analyses for over 25 years. Through developing our team relationships, our specialty appraisal practices have evolved to create high quality, industry-leading standards. Over this 25+ year relationship, our staff has evolved into specialty appraisal practices. One staff member appraises apartments, another large shopping centers, another office buildings, another industrial buildings; we even have a staff member that appraises churches.



### **Bradley J. Schopp, MAI**

Mr. Schopp is the Executive Director with Integra Realty Resource - St. Louis / Kanas City. Mr. Schopp also leads Integra's skilled nursing practice. He has completed more than 900 seniors housing and healthcare assignments in 37 states with asset values totaling more than \$8.5 billion. Prior to joining Integra, Mr. Schopp was a partner at Tellatin, Inc. Mr. Schopp also has experience in general commercial properties and was previously employed as a general commercial appraiser at Moore & Shryock in Columbia, Missouri



### **Brock A. Heyde, MAI**

Mr. Heyde is Senior Managing Director of the IRR - Kansas City office. He has over 12 years' experience in the appraisal industry and an additional four years in commercial lending/appraisal review. Although Mr. Heyde specializes in hotel valuation, he has extensive experience in all property types including retail, office, industrial, and multi-family, as well as special purpose properties including religious facilities, golf courses, movie theatres, and car washes. He additionally serves on the Board of Directors of the Kansas City Chapter of the Appraisal Institute and recently attended the Appraisal Institute's Leadership Development and Advisory Council (LDAC) in Washington D.C.



### **Timothy M. Schoemehl, MAI**

Mr. Schoemehl brings over 15 years of general commercial appraisal experience and 20 years of real estate experience to his role as Senior Managing Director of the IRR-St. Louis office. He has appraised a wide variety of property types including multifamily, office, retail, special purpose, and redevelopment. Prior to entering the appraisal profession, Mr. Schoemehl was Real Estate Specialist for the St. Louis Development Corporation.



### **Alisha M. Gammon, MAI**

Ms. Gammon is a Managing Director at Integra Realty Resources - St. Louis. Ms. Gammon has over twelve years of experience in the commercial real estate field. She has worked with companies such as Wells Fargo, C III Asset Management, Regions Bank, and US Bank. She has vast expertise in valuations and fair market rent studies on proposed, partially completed, renovated and existing structures. She has worked with a variety of clients including life insurance companies, attorneys, and major commercial banks.



### **Victor D. Cremeens, MAI**

Mr. Cremeens serves as Managing Director. He has exclusively appraised healthcare and senior housing properties since 2000. Prior to specializing in the healthcare and senior housing field, he appraised general commercial real estate for a period of 15 years. His appraisal assignments included a broad variety of property types, including: retail, office, industrial, hotel, special-purpose, agricultural, and land-in-transition properties. He has completed multiple subdivision analyses and condemnation appraisal assignments.

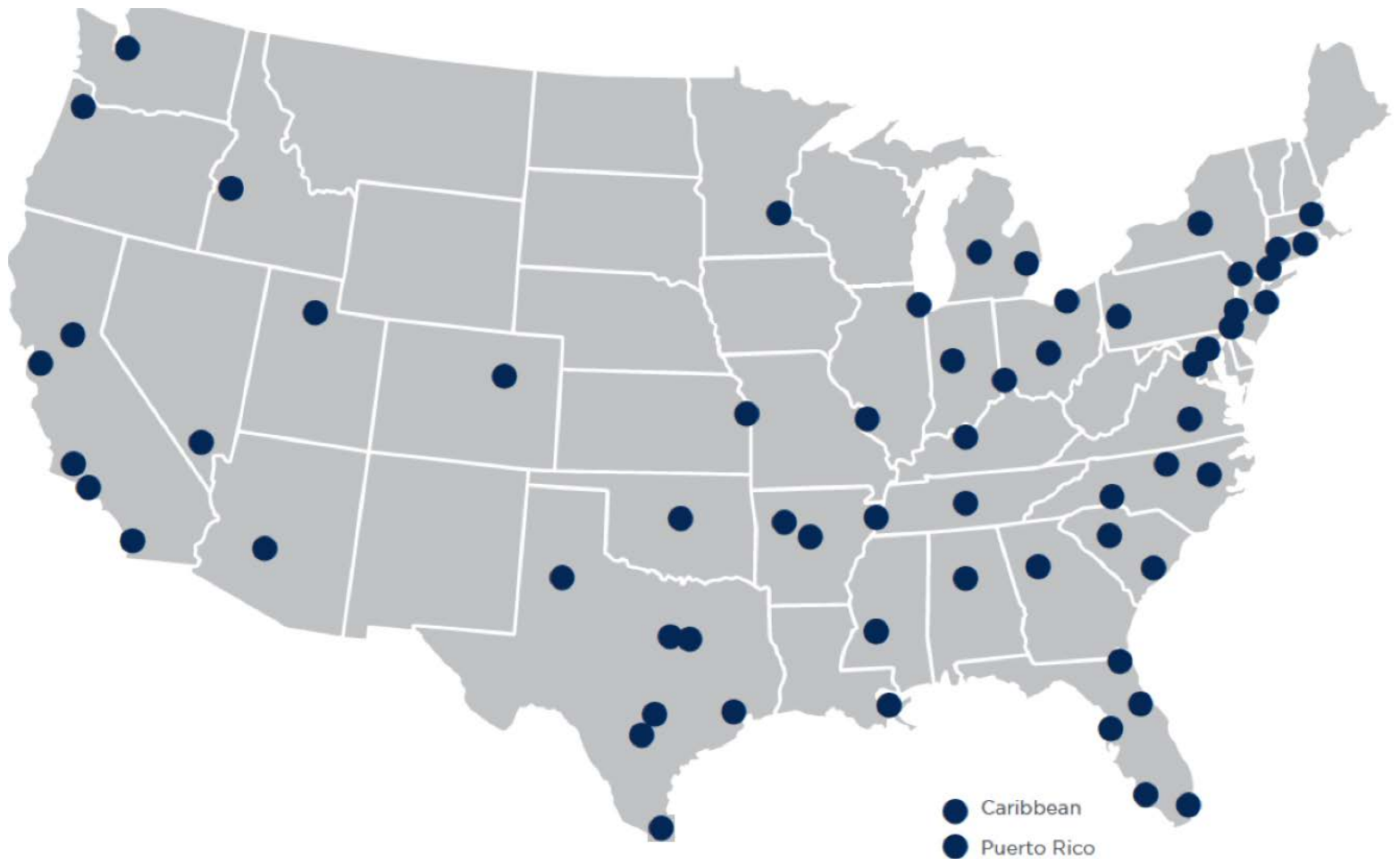
LOCAL EXPERTISE. NATIONALLY.

50+

local offices

60+

markets covered U.S. and Caribbean



## NORTHEAST OFFICES

### CONNECTICUT

Hartford, CT  
Todd Isaacson, MAI  
T (860) 291-8997 ext. 19  
tisaacson@irr.com

### MASSACHUSETTS

Boston, MA  
Jerry J. Manfra, MAI  
T (617) 457-3298  
jmanfra@irr.com

### NEW JERSEY

Coastal New Jersey  
Halvor J. Egeland, MAI  
T (732) 244-7000 ext. 103  
hegeland@irr.com

Northern New Jersey  
Paul T. Beisser, CRE, MAI, SCGRE  
T (973) 422-9800  
pbeisser@irr.com

### NEW YORK

Syracuse, NY  
William J. Kimball, MAI, FRICS  
T (315) 422-5577  
wkimball@irr.com

### PENNSYLVANIA

Philadelphia, PA  
Raja P. Waran, MAI  
T (908) 420-9797  
rwaran@irr.com

Pittsburgh, PA  
Brian Kelly, MAI, SRA  
T (412) 683-2211  
bkelly@irr.com

### RHODE ISLAND

Providence, RI  
Todd Isaacson, MAI  
T (860) 291-8997 ext. 19  
tisaacson@irr.com

## SOUTHEAST OFFICES

### ALABAMA

Birmingham, AL  
Rusty Rich, MAI, MRICS  
T (205) 949-5995  
rrich@irr.com

### ARKANSAS

Little Rock, AR  
Michelle Alexander, MAI, MRICS  
T (901) 322-1703  
malexander@irr.com

### FLORIDA

Miami | Caribbean  
James Andrews, MAI, CRE, FRICS, ASA/BV  
T (305) 670-0001 ext. 320  
jandrews@irr.com

Orlando, FL  
Christopher D. Starkey, MAI  
T (407) 843-3377 ext. 112  
cstarkey@irr.com

Southwest Florida  
Carlton J. Lloyd, MAI  
T (239) 687-5801  
clloyd@irr.com

Tampa, FL  
Kendra Stevens Barry  
T (813) 287-1000 ext. 110  
kbarry@irr.com

### GEORGIA

Atlanta, GA  
Matthew Albigese, MAI  
T (404) 418-4358 ext. 1000  
malbigese@irr.com

### LOUISIANA

New Orleans, LA  
John R. Praytor, MAI  
T (601) 714-1665  
jpraytor@irr.com

### MISSISSIPPI

Jackson, MS  
John R. Praytor, MAI  
T (601) 714-1665  
jpraytor@irr.com

### NORTH CAROLINA

Charlotte, NC  
John D. Scott, Jr., MAI, MRICS  
T (704) 206-8258  
jscott@irr.com

Greensboro, NC  
Nancy B. Tritt, MAI, SRA, FRICS  
T (336) 676-6033  
ntritt@irr.com

Raleigh, NC  
Chris R. Morris, MAI, FRICS  
T (919) 847-1717  
cmorris@irr.com

### SOUTH CAROLINA

Charleston, SC  
Cleveland "Bud" Wright, Jr., MAI  
T (843) 718-2125 ext. 10  
cwright@irr.com

Columbia, SC  
Michael B. Dodds, MAI, CCIM  
T (803) 772-8282 ext. 110  
mdodds@irr.com

### TENNESSEE

Memphis, TN  
Michelle Alexander, MAI, MRICS  
T (901) 322-1703  
malexander@irr.com

Nashville, TN  
Paul Perutelli, MAI, SRA, FRICS  
T (615) 628-8275 ext. 1  
pperutelli@irr.com

### VIRGINIA

Richmond, VA  
Kenneth L. Brown, MAI, FRICS, CCIM  
T (804) 346-2600 ext. 209  
kbrown@irr.com

## CENTRAL OFFICES

### ILLINOIS

Chicago, IL  
Ron DeVries, MAI, FRICS  
T (312) 565-3432  
rdevries@irr.com

### INDIANA

Indianapolis, IN  
Michael Lady, MAI, SRA, ASA, CCIM, FRICS  
T (317) 546-4720  
mlady@irr.com

### KENTUCKY

Louisville, KY  
Stacey S. Nicholas, MAI, MRICS  
T (502) 452-1543 ext. 3774  
snicholas@irr.com

### MICHIGAN

Detroit, MI  
Donald L. Selvidge, MAI  
T (248) 540-0040 ext. 114  
dselvidge@irr.com

### MINNESOTA

Grand Rapids, MI  
Jeff Genzink, MAI  
T (952) 905-2401  
jgenzink@irr.com

### MISSOURI

Minneapolis/St. Paul, MN  
Michael Amundson, MAI, CCIM  
T (952) 905-2401  
mamundson@irr.com

### MISSOURI

Kansas City, MO  
Brock A. Heyde, MAI  
T (816) 652-0222  
bheyde@irr.com

St. Louis, MO  
Timothy M. Schoemehl, MAI  
T (636) 898-6533  
tschoemehl@irr.com

### OHIO

Cincinnati/Dayton, OH  
Gary S. Wright, MAI, FRICS, SRA  
T (513) 426-7125  
gwright@irr.com

Cleveland, OH  
Douglas P. Sloan, MAI  
T (330) 659-3640 ext. 101  
dsloan@irr.com

Columbus, OH  
Brad A. Johnson, MAI  
T (614) 398-4307  
bajohnson@irr.com

## SOUTHWEST OFFICES

### ARIZONA

Phoenix, AZ  
Walter "Tres" Winus, III, MAI, FRICS  
T (602) 266-5599  
twinius@irr.com

### OKLAHOMA

Oklahoma City, OK  
Richard Cole, Jr., MAI  
T (405) 422-0718 ext. 2  
richard.cole@irr.com

### TEXAS

Austin, TX  
Todd Rotholz, MAI  
T (713) 973-0212 ext. 12  
trotholz@irr.com

Dallas, TX  
Jimmy H. Jackson, MAI  
T (972) 725-7724  
jhjackson@irr.com

Ft. Worth, TX  
Alan Pursley, MAI, SRPA, SRA, SGA  
T (817) 763-8023  
apursley@irr.com

Houston, TX  
Todd Rotholz, MAI  
T (713) 973-0212 ext. 12  
trotholz@irr.com

Lubbock, TX  
Taylor Carmona  
T (409) 656-5199  
taylor.carmona@irr.com

San Antonio, TX  
Brandon Brehm, MAI, CCIM  
T (210) 446-4444  
bbrehm@irr.com

## WEST OFFICES

### CALIFORNIA

Los Angeles, CA  
John G. Ellis, MAI, CRE, FRICS  
T (818) 290-5444  
jellis@irr.com

Orange County  
J. Richard Donahue, MAI  
T (714) 665-6515  
rdonahue@irr.com

Sacramento, CA  
Kevin Ziegenmeyer, MAI  
T (916) 435-3883 ext. 224  
kziegenmeyer@irr.com

San Diego, CA  
John A. Morgan, MAI  
T (858) 259-4900 ext. 315  
jmorgan@irr.com

San Francisco, CA  
Jeffrey Fillmore, MAI  
T (408) 299-0444  
jfillmore@irr.com

### COLORADO

Denver, CO  
Larry B. Close, MAI  
T (720) 833-5931  
lclose@irr.com

### IDAHO

Boise, ID  
Bradford Knipe, MAI, ARA, CRE, CCIM, FRICS  
T (208) 472-3200  
bknipe@irr.com

### NEVADA

Las Vegas, NV  
Charles E. Jack, IV, MAI  
T (702) 906-0480  
cjack@irr.com

### UTAH

Salt Lake City, UT  
John T. Blanck, MAI, MRICS  
T (801) 263-9700 ext. 109  
jblanck@irr.com

### WASHINGTON

Seattle, WA  
Matthew A. Bacon, MAI  
T (206) 436-1179  
mbacon@irr.com

## CARIBBEAN

Caribbean  
James Andrews, MAI, CRE, FRICS, ASA/BV  
T (844) 952-7604 ext. 402  
jandrews@irr.com

Puerto Rico  
Carlos Vélez, MAI, SRA, BCA, CMEA, CCIM, MRICS  
T (787) 782-4974  
cvelez@irr.com

**INTEGRA REALTY RESOURCES - KANSAS CITY**

1100 Main Street, Suite 400  
Kansas City, MO 64105  
T: (816) 652-0222 x 2001  
F: (636) 530-0046  
[irr.com/KC](http://irr.com/KC)

Brock A. Heyde, MAI  
Senior Managing Director  
T (816) 652-0222  
[bheyde@irr.com](mailto:bheyde@irr.com)

Bradley J. Schopp, MAI  
Executive Director  
T (636) 821-5310  
[bschopp@irr.com](mailto:bschopp@irr.com)

**irr.com**

Visit us online to learn more  
and access our extensive  
research library.



INTEGRA REALTY RESOURCES  
Local Expertise. Nationally.